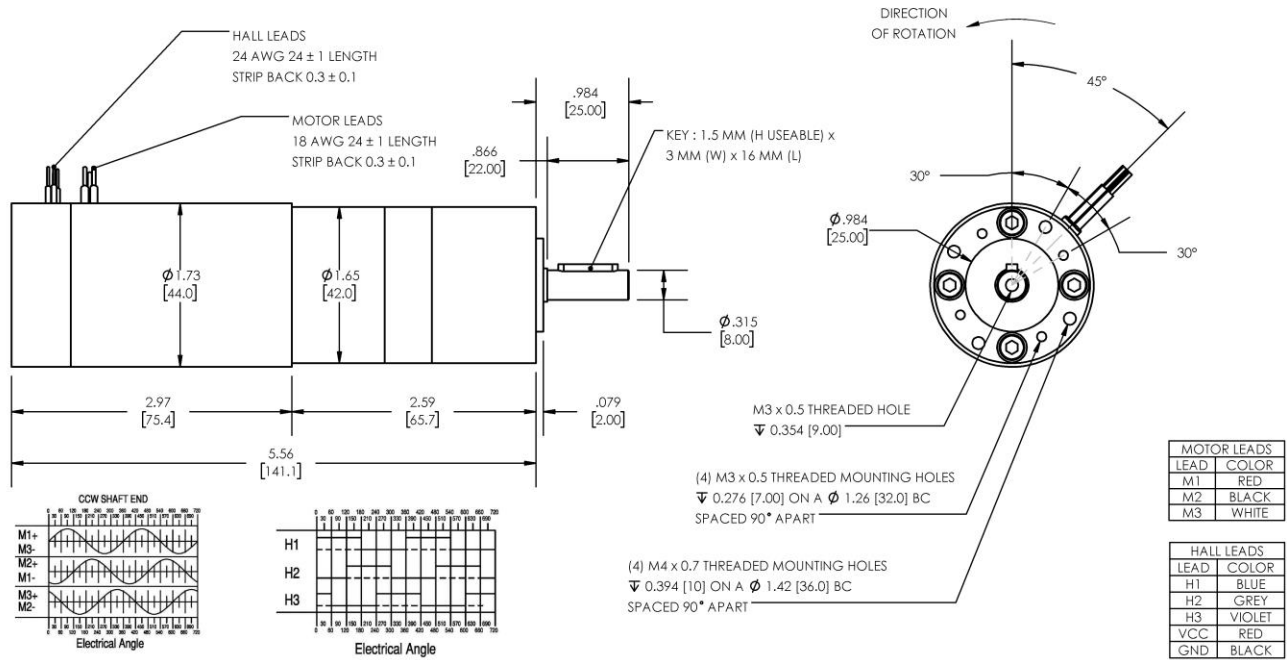


**Model Number:**

## MMP BL44-297K-180V GP42-007



DIMENSIONS ARE INCHES [MM] UNLESS OTHERWISE STATED

PLANETARY GEARMOTOR OUTPUT PARAMETERS:	VALUE	UNITS	TOLERANCE
Gearhead Ratio (exact)	6.75 : 1		
Gearhead Shaft Output Speed (at full-load)	741	RPM	MAX
Gearmotor Rated Continuous Torque	6.8	In-Lbs	MAX
Gearmotor Rated Peak Torque	<b>38++</b>	In-Lbs	----
Gearhead Standard Backlash	54	Arc Minutes	MAX
Gearhead Efficiency	80%	----	----
Output Shaft Radial Load Capacity	36	Lbs	MAX
Output Shaft Axial Load Capacity	12	Lbs	MAX
Gearmotor Total Weight	1.6	Lbs	MAX

**++ All Peak Torque values are dependent upon duty. Contact our sales office for details.**

DC MOTOR PERFORMANCE PARAMETERS:	VALUE	UNITS	TOLERANCE
Rated DC Voltage	180	DC VOLTS	----
Rated Continuous Current	0.50	AMPERES	----
No-Load Speed	5688	RPM	+/- 15%
Rated Speed	5001	RPM	+/- 15%
Rated Continuous Power Out	74	WATTS	+/- 15%
Rated Continuous Torque	20	OZ-IN	----
Peak Torque (motor only)	111	OZ-IN	----
No-Load Current	0.03	AMPERES	10%
Back EMF Constant (Ke)	31.4	V/KRPM	+/- 10%
Torque Constant (Kt)	42.5	OZ-IN/AMP	+/- 10%
DC Armature Resistance	45.80	OHMS	+/- 15%
Armature Inductance	40.37	mH	+/- 15%
Armature temperature	155	DEG. C	MAX

**NOTES:**

- ENCODER & BRAKE OPTIONS AVAILABLE – [FOLLOW THIS LINK FOR DETAILS](#)
- NEMA MOUNTING FLANGE OPTION AVAILABLE – [FOLLOW THIS LINK FOR DETAILS](#)

# MIDWEST MOTION PRODUCTS, INC

DESIGN, MANUFACTURING & DISTRIBUTION - MOTION CONTROL EQUIPMENT

[www.midwestmotion.com](http://www.midwestmotion.com)

email: [sales@midwestmotion.com](mailto:sales@midwestmotion.com)